



Alton Way

, West Kilbride KA23 9JJ

- 3 Bedrooms
- Countryside Views
- Kitchen/Breakfast Room
- Quiet Location
- Contemporary Bathroom
- Detached Garage
- Mature Gardens
- South Facing Back Garden

Offers In The Region Of £175,000 Freehold





Location

Full description

The accommodation begins with a welcoming entrance hallway leading to a bright and spacious lounge, featuring large windows that allow natural light to flood the room. The kitchen is fitted with a range of modern units and offers ample worktop space, with room for a dining table overlooking the rear garden.

Upstairs, the property offers three comfortable bedrooms, including a generous main bedroom, a second double room, and a versatile third bedroom suitable as a child's room, home office, or guest room. A contemporary family bathroom completes the upper level.

Externally, the property benefits from a good-sized south facing private rear garden, offering excellent space for outdoor dining, or gardening with vegetable patch and herb garden already sectioned. The front garden is a mix of patio and forest willow garden. The property also benefits from a detached garage with parking.

West Kilbride boasts many amenities including excellent primary schooling, local shopping facilities and cafe's, also boasting a superb links golf course. Known as 'Craft Town Scotland', West Kilbride offers fine craft studios and galleries, whilst for the outdoor enthusiast there are fabulous coastal walks on its doorstep including the West Kilbride Glen in addition to the West Coast Golf Trail, a haven of romantic seascapes and magnificent golf courses including West Kilbride, Largs, Loans, Prestwick, Royal Troon and Turnberry. For the commuter there is a frequent rail service to Glasgow as well as direct road links to Glasgow International Airport and other major towns in the West of Scotland, making this an ideal base to enjoy family living on the Ayrshire coast. **VIEWING:** Strictly by appointment through Coast Estate Agents on 01294 313016 **OFFERS:** All offers should be submitted to Coast Estate Agents at info@coastscotland.com **INTEREST:** It is important your solicitor notifies this office of your interest otherwise this property may be sold prior to your knowledge. **HAVE A PROPERTY TO SELL?** Call Coast Estate Agents on 01294 313016 and arrange your **FREE** valuation. **Disclaimer:** Whilst we endeavour to provide as accurate information as possible, our particulars are for reference only. Dimensions are taken at widest points, and our floor plans are not to scale. Some photographs may have been edited using AI.

Hallway

Breakfasting kitchen

17'9" x 9'10"

Lounge

14'1" x 12'10"

Bedroom 1

11'10" x 10'2"

Bedroom 2

10'6" x 12'10"

bedroom 3

7'10" x 7'7"

Outside Space

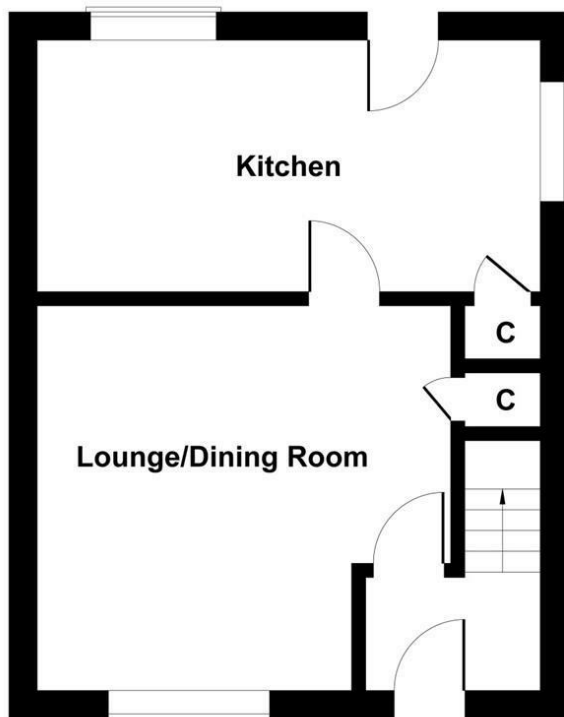
The rear garden is South Facing , allowing all day entertaining with paved patio areas to the immediate rear of the property. Kitchen garden with vegetable patch and herb garden. The front of the property is laid to paved patio to the immediate front with forest garden and willow arches. Wooden arbour to enjoy the South facing sun. Detached garage with up and over door.



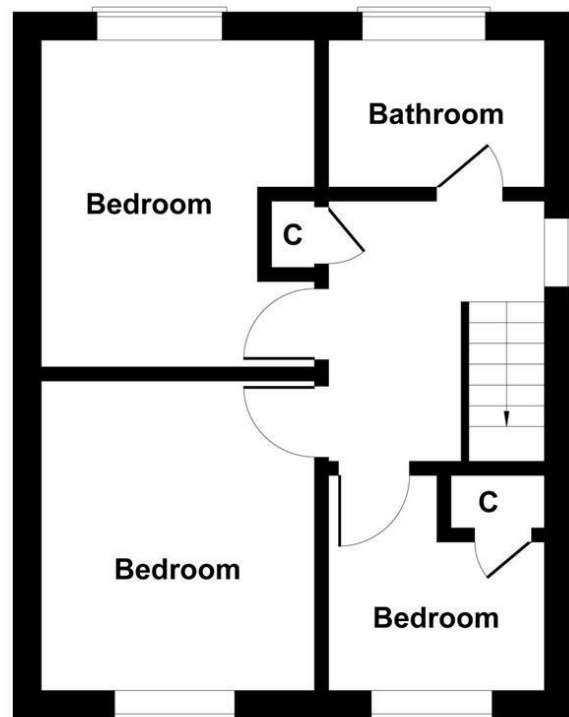
Local Authority **North Ayrshire Council**
Council Tax Band **C**
EPC Rating **D**



21 Alton Way, West Kilbride



GROUND FLOOR



FIRST FLOOR

Not to Scale. Produced by The Plan Portal 2026
For Illustrative Purposes Only.

West Kilbride Office

65 Main Street, West Kilbride, KA23
9AW

Contact

01294 313016
info@coastscotland.com
<https://www.coastscotland.com/>

Agents Note: Whilst every care has been taken to prepare these particulars, they are for guidance purposes only. All measurements are approximate and for general guidance purposes only and whilst every care has been taken to ensure accuracy, they should not be relied upon and potential buyers/tenants are advised to recheck the measurements.